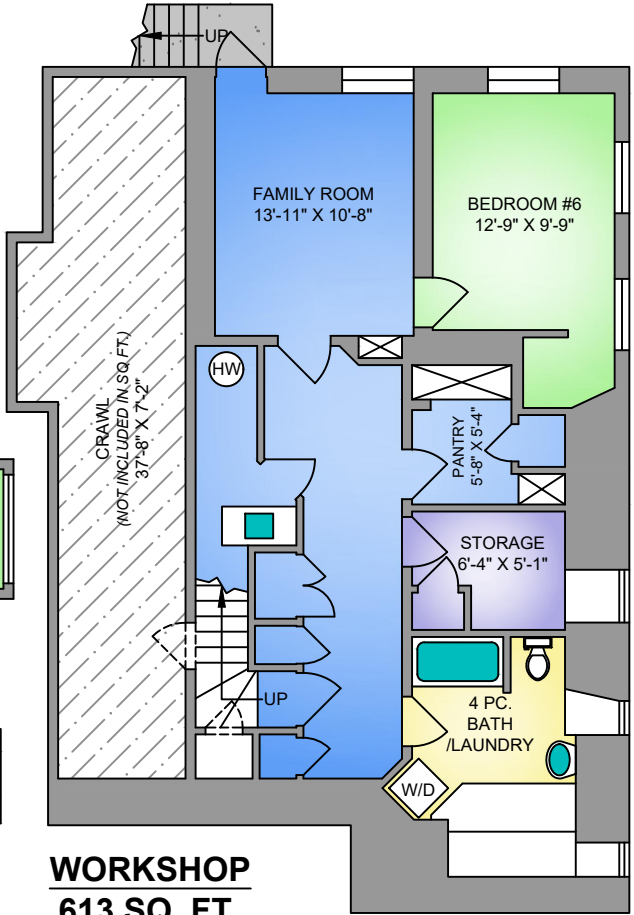
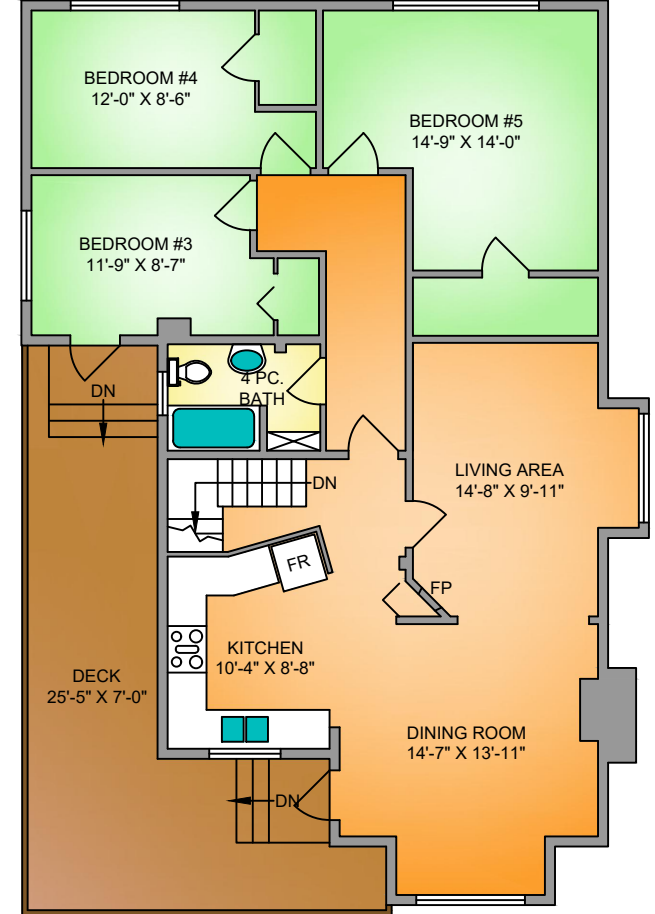


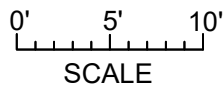
LOWER FLOOR
1041 SQ. FT.
7'-0" CEILING



UPPER FLOOR
1235 SQ. FT.
8'-6" CEILING



NORTH



335 MACHLEARY STREET
 JUNE 28, 2022

Prepared by PROPER MEASURE MID ISLAND for the exclusive use of ROB GREY
 Plans may not be 100% accurate. Buyer must verify any critical measurement.
 Private resale or modification of floor plans to a third party by any individual or entity other than Proper Measure Mid Island is strictly prohibited

FLOOR	AREA (SQ. FT.)		
	FINISHED	UNFINISHED	DECK / PATIO
MAIN	1410	-	290
UPPER	1235	-	246
LOWER	1041	-	-
TOTAL	3686	-	536
WORKSHOP	-	613	-